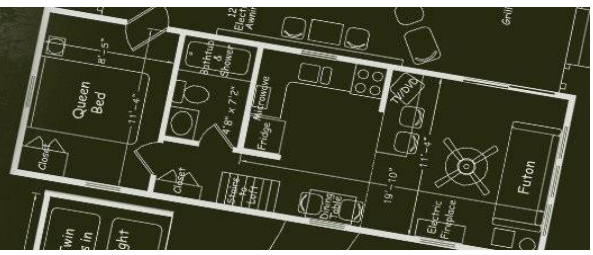


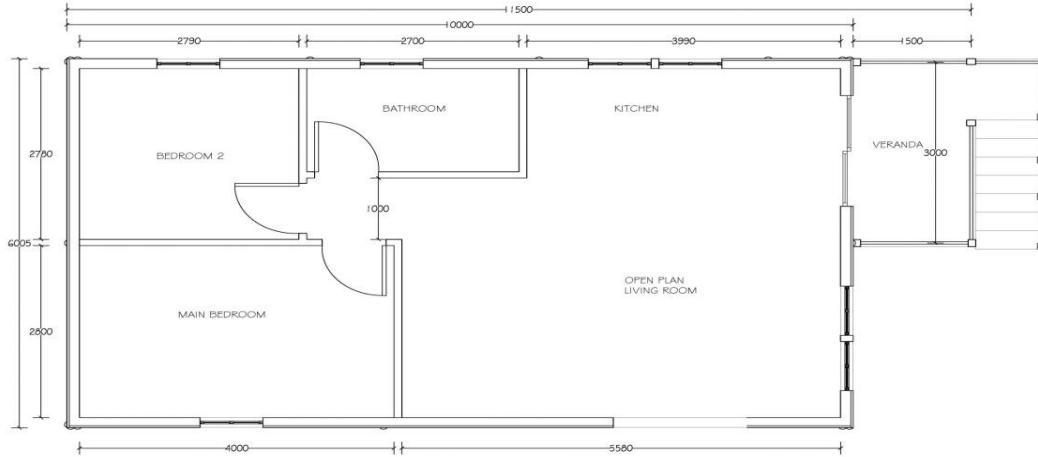
# WOODEN CABINS AND WENDYS

CUSTOM BUILT LOG CABINS & WENDYS  
 Reg No: 2014/280619/07 / VAT No: 4100274945  
 071 433 2364 / logcabins45@gmail.com  
 www.woodencabins.co.za



## 2 BEDROOM 6.0Mx10.0M WITH VERANDA

*(Example of a layout - this layout is not fixed, cliets can ask to change the inside layout)*



<b>WENDY CABIN</b> <b>16mm T &amp; G</b>	<b>LOG CABIN</b> <b>32mm Log Profile</b>	<b>SABS LOG CABIN</b> <b>32mm Log Profile</b>			
<b>16mm T&amp;G Shell Incl.</b> <b>6mx10m with 3mx1.5m Veranda</b>	<b>32mm LOG CABIN Shell Incl.</b> <b>6mx10m with 3mx2m Veranda</b>	<b>SABS LOG CABIN Shell Incl.</b> <b>6mx10m with 3mx2m Veranda</b>			
<ul style="list-style-type: none"> <li>* Timber not CCA treated, painted with waksal F</li> <li>* Trusses NON SABS</li> <li>* 2.0mx3.0m Veranda with rails, landing and staircase</li> <li>* Stilted base - Unit is elevated approx 700mm above surface and 1.2m apart.</li> <li>* Laminated Flooring</li> <li>* Cladding - 6mm Rhino board on the inside of Cabin. Painted</li> <li>* Ceiling - 6mm Rhino board , flat ceiling with cornices. Painted</li> <li>* Aluminum sliding door 1.8m(w)x2.1m (H)</li> <li>* Inner wall partitioning with masonite Hollow doors, with handles and locks.</li> <li>* Aluminum Windows</li> <li>* Wall Height: 2.4m</li> <li>* Roof: .3mm Corrugated Iron Roof</li> <li>* 1 x DB Board, 7 x Lights, 8 x plugs and all wiring inside house.</li> <li><b>(Client to get electrician to conect to main and provide electrical-compliance certificate)</b></li> <li>* Standard Kitchen with melamine tops and zink.</li> <li>* Standard bathroom: Toilet, handbasin, bath or shower and gas or elec geysers.</li> <li><b>(All plumbing done inside the house, client to get plumber to connect to main)</b></li> <li>* This product is non SABS</li> <li>* Transport - will be calculated per client specs and city.</li> </ul>	<ul style="list-style-type: none"> <li>* Timber CCA treated, painted with waksal F</li> <li>* Trusses SABS</li> <li>* 2.0mx3.0m Veranda with rails, landing and staircase</li> <li>* Stilted base - Unit is elevated approx 700mm above surface and 1.2m apart.</li> <li>* Laminated Flooring</li> <li>* Cladding - 6mm Rhino board on the inside of Cabin. Painted</li> <li>* Ceiling - 6mm Rhino board , flat ceiling with cornices. Painted</li> <li>* Aluminum sliding door 1.8m(w)x2.1m (H)</li> <li>* Inner wall partitioning with masonite Hollow doors, with handles and locks.</li> <li>* Aluminum Windows</li> <li>* Wall Height: 2.4m</li> <li>* Roof: .3mm Corrugated Iron Roof</li> <li>* 1 x DB Board, 7 x Lights, 8x plugs and all wiring inside house.</li> <li><b>(Client to get electrician to conect to main and provide electrical-compliance certificate)</b></li> <li>* Standard Kitchen with melamine tops and zink.</li> <li>* Standard bathroom: Toilet, handbasin, bath or shower and gas or elec geysers.</li> <li><b>(All plumbing done inside the house, client to get plumber to connect to main)</b></li> <li>* This product is non SABS</li> <li>* Transport - will be calculated per client specs and city.</li> </ul>	<ul style="list-style-type: none"> <li>* Timber CCA treated, painted with silkwood</li> <li>* Trusses SABS</li> <li>* 2.0mx3.0m Veranda with rails, landing and staircase</li> <li>* Stilted base - Unit is elevated approx 700mm above surface and 1.2m apart.</li> <li>* Double flooring &amp; Laminated Flooring</li> <li>* Cladding - 6mm Rhino board on the inside of Cabin. Painted</li> <li>* Ceiling - 6mm Rhino board , flat ceiling with cornices. Painted</li> <li>* Aluminum sliding door 1.8m(w)x2.1m (H)</li> <li>* Inner wall partitioning with masonite Hollow doors, with handles and locks.</li> <li>* Aluminum Windows</li> <li>* Wall Height: 2.4m</li> <li>* Roof: SABS Structural, Isolation ACC7</li> <li>* 1 x DB Board, 7 x Lights, 8 x plugs and all wiring inside house.</li> <li><b>(Client to get electrician to conect to main and provide electrical-compliance certificate)</b></li> <li>* Standard Kitchen with melamine tops and zink.</li> <li>* Standard bathroom: Toilet, handbasin, bath or shower and gas or elec geysers.</li> <li><b>(All plumbing done inside the house, client to get plumber to connect to main)</b></li> <li>* This product is SABS</li> <li>* Transport - will be calculated per client specs and city.</li> </ul>			
<b>TOTAL (Excl Vat)</b>	<b>R231 949.00</b>	<b>TOTAL (Excl Vat)</b>	<b>R271 795.00</b>	<b>TOTAL (Excl Vat)</b>	<b>R380 312.00</b>

**TERMS AND CONDITIONS**

- 1) SITE AREA TO BE CLEAN.
- 2) AN ELECTRICAL SUPPLY WILL BE REQUIRED. NO ELECTRICAL, CUSTOMER TO PROVIDE GENERATOR, PETROL/ DIESEL
- 3) THE CABIN WILL NOT BE RELOCATED AFTER LEVELLING HAS BEGUN. ANY DELAY CAUSED BY THE ABOVE CONDITIONS NOT BEING ADHERED TO, WILL RESULT IN A MINIMUM SURCHARGE OF R290.00 PER HOUR.
- 4) TERMS: 90% DEPOSIT, 5% ROOF HEIGHT, 5% ON COMPLETION
- 5) GOODS REMAIN THE PROPERTY OF WENDY'S AND CABINS UNTIL PAID IN FULL.
- 6) THESE CABINS MAY REQUIRE MUNICIPAL PLANNING PERMISSION.  
(RESPONSIBILITY FOR THE APPLICATION & APPROVAL RESTED UPON THE PURCHASER.)
- 7) WENDY'S AND CABINS IS NOT LIABLE FOR ANY DAMAGE TO A CABIN RESULTING FROM GROUND INSTABILITY OR MOVEMENT OFF A LOOSE BASE.

**Specifications** (*SABS Has different specifications*)**Base**

The stilts (Poles 100x125 diameter) are H4 CCA treated. H4 CCA treatment is specially for external use. The base frame is constructed from S5 grade timber 152 x 38 mm bearers. Main bearers are bolted to the stilts with 12mm treaded rod. Every stilt gets planted +- 500 mm deep and stands +- 700mm above ground, we can built up to 2.1m

**Floors**

The floor is a 17mm Tongue & Groove SA Pine which is fitted on to floor beams (114 x 38mm), spaced 420mm. The floor planks are fitted with 63 mm oval nails.

**Internal Walls**

The internal walls are manufactured from 38x76mm timber. The uprights of the internal walls are spaced 500 mm. After installation the frame gets clad with 6mm Rhinoboard drywall.

**Wooden Wall Panels (Frame)**

The wall panels are manufactured with timber which is CCA treated. CCA treatment is a waterborne copper chrome arsenic preservative used for preserving timber. During the treatment process the three active ingredients carried into the wood by the water. Each has a T function to perform: Copper is the fungicide to prevent rot, Arsenic is the insecticide to prevent insect attack and Chrome fixes them both to the timber in a chemical reaction. When the treatment process is over and the timber is dry the fixation is permanent thus keeping the chemicals from washing out.

**Construction of wall panels**

The frame gets built with 38x76 mm timber, uprights are spaced 500 mm. On the external side of the frame it gets covered with CCA treated 32mm Log profile timber which is V5 grade, on the internal side of the frame sisolation (OPTIONAL EXTRA) gets fixed before 6 mm Rhinoboard drywalling is installed.

**Ceiling**

6 mm Rhinoboard ceiling with bishop strips is used, the ceiling board gets fitted onto the 38mm battens which are spaced 400 mm apart. The sisolation (OPTIONAL EXTRA) gets fitted into the roof cavity.

**Windows**

Aluminum windows are fitted. Aluminum windows are maintenance free.

**Internal Doors & External Doors**

All internal doors are fitted in a pine door frames. The internal doors are standard masonite hollow door fitted with handles and locks. Aluminum Sliding Door 1.8mx2.1m(H) is fitted into a pine wooden frame. An extra external back door (pine solid wooden door, fitted in a pine frame) can be added at an extra fee.

**Roofs**

Engineer designed trusses, which is gang nailed are used for construction. Corrugated Iron 0.3mm / 0.4mm, Cromadek or 0.4 IBR sheet can be used.

**Treatment**

Although all timber is CCA treated (Specially for exterior use), the house gets painted with a wood sealant. We seal the exterior of the cabin with an oil sealant (WAKSOL F). Oil penetrates into the wood and stops it from drying out and crackeing. It waterproofs the wood completely. We apply the first coat of wood sealant. The sun and winds causes the oil to break down over time. Customers must re-apply wood sealant. Maintenance and material cost of WAKSOL F treatment is fairly low.

**We would like to bring to your attention that the National Treasury recently announced an increase in the Value-added Tax (VAT) rate from 14% to 15%. This will be effective from 1 April 2018. To comply with legislation, Wooden Cabins and Wendy's will be amending the VAT rate on the sale of all products and services where VAT is applicable to 15% effective from 1 April 2018**